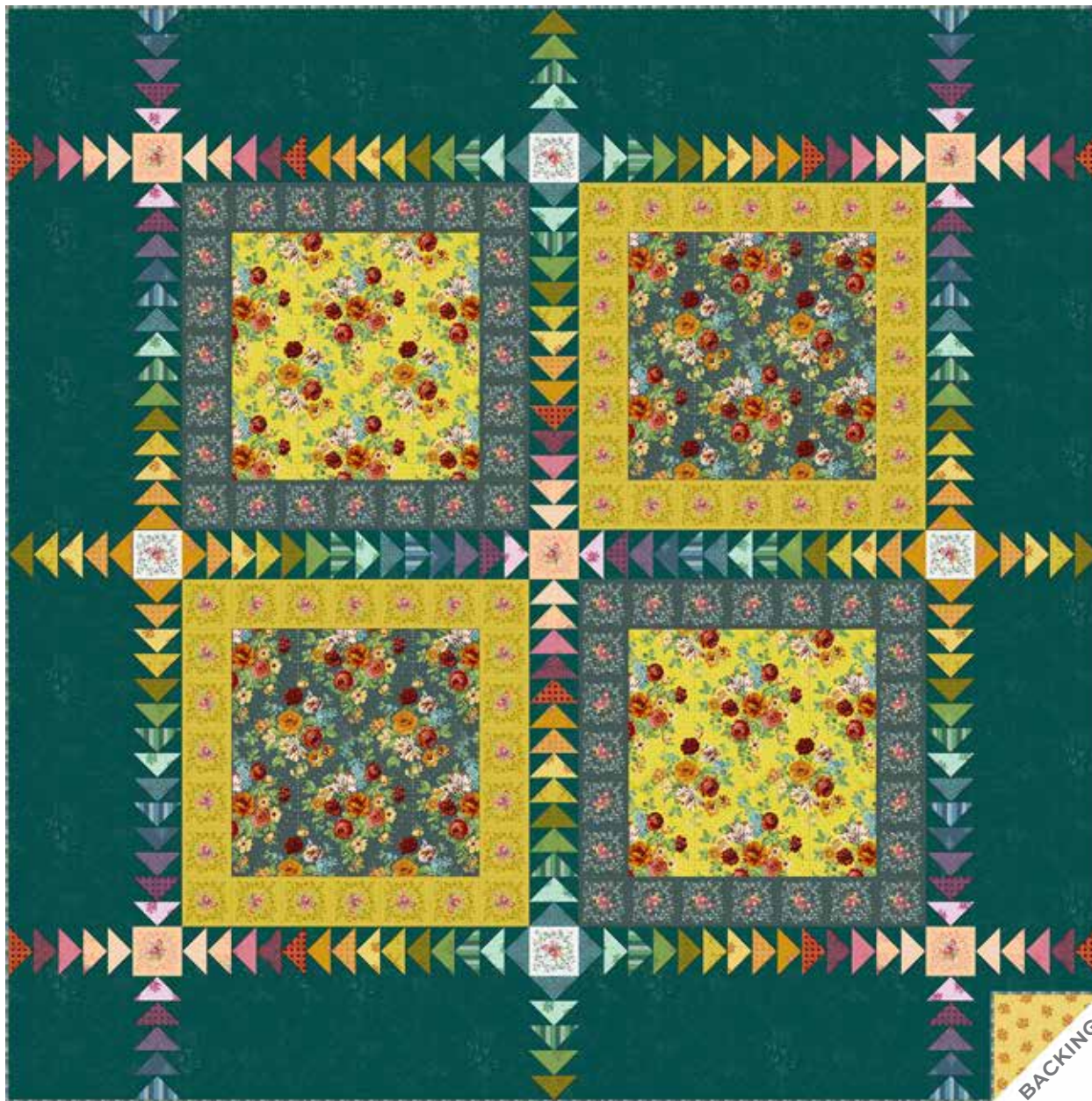


Nonna

GIUCY GIUCE



100
years



Zia Bakula Quilt designed by: **Giucy Giuce** • Quilt Size: **88" x 88"**

Skill Level: **Advanced Beginner** • andoverfabrics.com

andover



makower.uk

Free Pattern Download Available

1384 Broadway New York, NY 10018
Tel. (800) 223-5678 • andoverfabrics.com

Zia Bakula Quilt

Introducing Andover Fabrics new collection: **NONNA** by Giucy Giuce

Quilt designed by Giucy Giuce



Quilt finishes 88" x 88"

4 Blocks: 28" x 28"

Gorgeous floral prints are the focus of this pieced quilt, large enough to be a topper for a king-size bed. Colorful Flying Geese units (F. G.) surround the formal "gardens."

Cutting Directions

Note: Read assembly directions before cutting patches. All measurements are cut sizes and include 1/4" seam allowances. A fat 1/8 is a 9" x 20"-22" cut of fabric. A fat 1/4 is an 18" x 20"-22" cut. WOF designates the width of fabric from selvedge to selvedge (approximately 42" wide).

Fabric A Fussy-cut (2) squares 20 1/2" x 20 1/2", centering the motifs

Fabric B Fussy-cut (2) squares 20 1/2" x 20 1/2", centering the motifs

Fabric C Fussy-cut (4) strips 4 1/2" x 28 1/2"
Fussy-cut (4) strips 4 1/2" x 20 1/2"
Cut (14) rectangles 2 1/2" x 4 1/2"

Fabric D Fussy-cut (4) strips 4 1/2" x 28 1/2"
Fussy-cut (4) strips 4 1/2" x 20 1/2"

Fabric E Cut (8) rectangles 10 1/2" x 28 1/2"
Cut (4) squares 10 1/2" x 10 1/2"
Cut (456) squares 2 1/2" x 2 1/2"

Fabric F Cut (4) squares 4 1/2" x 4 1/2"

Fabric G Cut (5) squares 4 1/2" x 4 1/2"
Cut (10) rectangles 2 1/2" x 4 1/2"

Fabric H Cut (16) rectangles 2 1/2" x 4 1/2"

7 Fat 1/4 From each:
Cut (14) rectangles 2 1/2" x 4 1/2"

9 Fat 1/8 From each:
Cut (10) rectangles 2 1/2" x 4 1/2"

Binding Cut (10) strips 2 1/2" x WOF

Backing Cut (3) panels 32" x 95", pieced to fit quilt top with overlap on all sides

Fabric Requirements

	Yardage	Fabric	
Fabric A	blocks	5/8 yard	9872 B
Fabric B	blocks	5/8 yard	9872 Y
Fabric C	blocks	1 1/2 yards	9873 Y
Fabric D	blocks	1 1/2 yards	9873 B
Fabric E	border	4 1/2 yards	9248 T4
Fabric F	setting	fat 1/8 yard	9873 C
*Fabric G	setting	3/8 yard	9873 O
Fabric H	F.G.	fat 1/4 yard	9879 G
7 Fat 1/4	F.G.	fat 1/4 yard each	
	9874 G	9874 O	*9874 Y 9875 G 9876 Y
	9877 G	9878 T	
9 Fat 1/8	F.G.	fat 1/8 yard each	
	9874 E	9875 B	9875 E 9876 O 9876 P
	9877 B	9878 P	9878 R 9879 E
Binding		3/4 yard	9877 C
*Backing		8 yards	9874 Y

Making the Quilt

1. Referring to the Quilt Diagram, sew shorter Fabric C strips to sides of the A squares. Sew longer Fabric C strips to the top and bottom. Likewise, sew Fabric D strips to the Fabric B squares. The blocks should measure 28 1/2" square. Set aside.
2. If you wish your quilt to look like the one shown, it is important to pay attention to the colors as you cut the 2 1/2" x 4 1/2" rectangles. Some colors are used in 10 Flying Geese (F.G.) units, some in 14, and one in 16 units. The pieced Flying Geese units used in the sashes are made with this simple, error-free method. Draw a diagonal line on the wrong side of each Fabric E 2 1/2" square. Place a marked square on one end of a 2 1/2" x 4 1/2" rectangle, right sides together. Sew on the marked line; trim away and discard excess fabric (Diagram 1). Press open. Repeat this process on the opposite end of the rectangle (Diagram 2) to make a Flying Geese unit. Be sure that it measures 2 1/2" x 4 1/2". Make 228 total.

- Referring to the Flying Geese figures, join 14 appropriate Flying Geese units to make 6 F.G. 1 sashes and 6 F.G. 2 sashes. Join 5 appropriate Flying Geese to make 4 each of F.G. 3 and F.G. 4, and 2 each of F.G. 5 and F.G. 6. Press seam allowances in each sash toward the “noses” of the Flying Geese.
- Refer to the Quilt Diagram for the remaining directions. On a large flat surface, lay out the parts in 7 rows as shown, paying careful attention to the orientation of the Flying Geese sashes. Take note of how the Flying Geese sashes surround the F and G 4½” squares. Once you are satisfied with the arrangement, join the parts into rows. Press seam allowances away from the Flying Geese. Join the rows.

Finishing the Quilt

- Layer the quilt with batting and backing and baste. Quilt in the ditch around sashes, block patches, and Flying Geese. Quilt around the printed motifs in the blocks. Quilt Fabric E patches as you wish. Bind to finish the quilt.

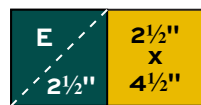


Diagram 1

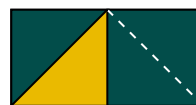


Diagram 2



F.G. 1 – Make 6



F.G. 2 – Make 6



F.G. 3 – Make 4



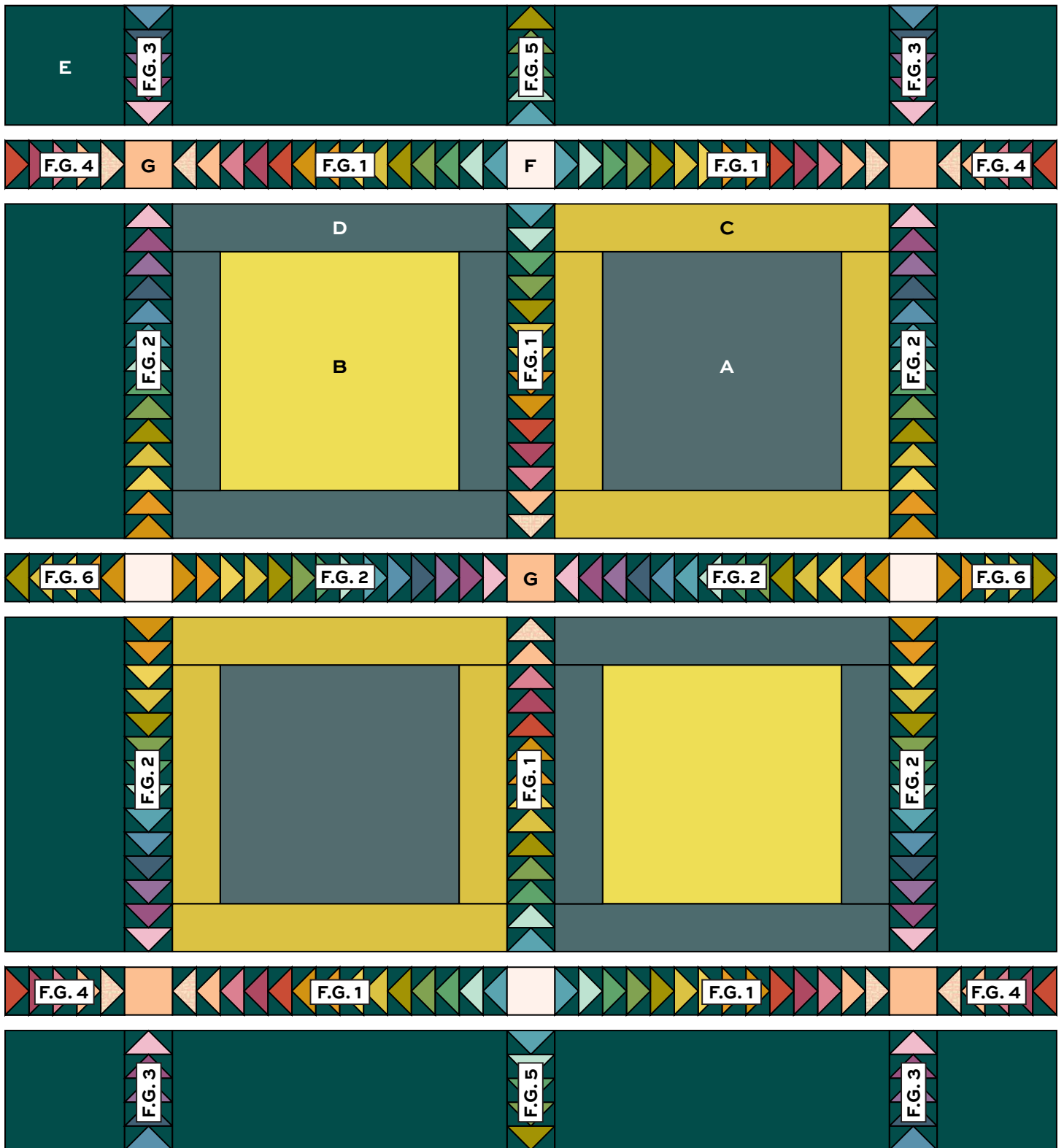
F.G. 4 – Make 4



F.G. 5 – Make 2



F.G. 6 – Make 2



Quilt Diagram

Nonna

GIUCY GIUCE



100
years



9872 B*



9873 B*



9873 C*



9872 Y*



9873 O*



9873 Y*



9874 C



9874 E*



9874 G*



9874 O*



9874 Y*



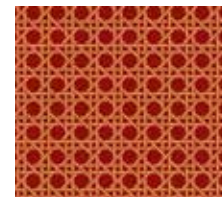
9875 B*



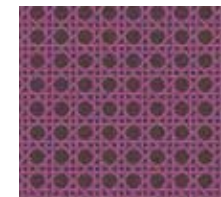
9875 E*



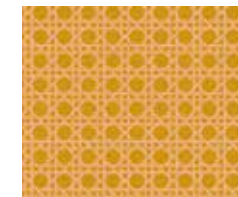
9875 G*



9876 O*



9876 P*



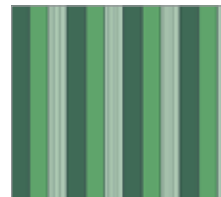
9876 Y*



9877 B*



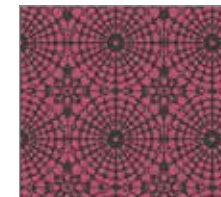
9877 C*



9877 G*



9878 P*



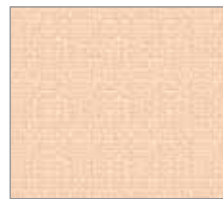
9878 R*



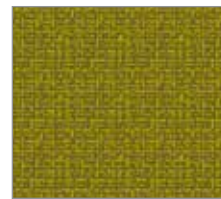
9878 T*



9879 C



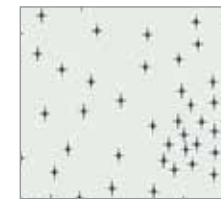
9879 E*



9879 G*



9880 C



9880 L



9248 T4*

Additional fabric from
Spectrastatic II
by Giucy Giuce

*Indicates fabrics used in quilt pattern. Fabrics shown are 25% of actual size.

Free Pattern Download Available

1384 Broadway New York, NY 10018

Tel. (800) 223-5678 • andoverfabrics.com